

Banská Štiavnica Geopark



Banská Štiavnica - Water reservoir Ottergrund

Slovak Republic

GEO  **Banská Štiavnica
PARK**

Banská Štiavnica Geopark

The establishment of the Banská Štiavnica Geopark, a territory with an interesting and varied geological structure, dates back to **2000**. **It is located on the territory of the district of Banská Štiavnica** (Banská Štiavnica city and municipalities: Banská Belá, Banský Studenec, Baďan, Beluj, Dekýš, Ilija, Kozelník, Močiar, Počúvadlo, Podhorie, Prenčov, Svätý Anton, Štiavnické Bane and Vysoká), **Žarnovica** (municipality Hodruša - Hámre and Voznica) and **Žiar nad Hronom** (municipality Vyhne). It spreads over an area of **374 km²**.



1 *Photo panorama from the Red Well*

The **Protected Landscape Area of Štiavnické mountains** interfere with its territory. Within the geopark, three information centres, two heritage drifts, four educational footpaths and a geological exposition are in operation. Part of the geopark's object system are also objects registered on the UNESCO World Cultural and Natural Heritage List „Historic Town of Banská Štiavnica and the technical monuments of the surrounding area“.



2 *Lower Shopfer drift*



3 *Water reservoir Počúvadlo*



4 *Photo panorama from the calvary of Banská Štiavnica*

Since 2016, the geopark has been established as national geopark of the Slovak Republic, included in the Slovak Geoparks Network. There are 156 locations in its territory: geological (1), geological and mining (8), geological and natural (2), geological, natural and archaeological (1), natural (8), mining (83), mining and recreational (17), mining and archaeological (1), cultural-historical and archaeological (1) and cultural-historical (34). The Geopark is managed by the **Regional Association for the Development of Banská Štiavnica and its surroundings – the Sitno Region** located



5 *Shaft Mayer II*



6 *Stone Sea in Vyhne*

in Prenčov. Since 2008, the management of already built elements of the geopark have passed into the competence of the Slovak Mining Museum, the State Nature Conservancy of the Slovak Republic and the municipality of Štiavnické Bane.

Priorities of the Banská Štiavnica geopark development are:

1. operation and maintenance of the object system existing elements;



2. coordination of subjects activities and individual actors involved in operation, maintenance and completion of the geopark object system;

3. education, enlightenment and dissemination of information for all age categories and types of institutions;

4. identification, selection, preparation and gradual sustainable building of further elements of the object system.



CONTACTS

www.geopark.sk | www.geoparkbs.sk



Združenie Región Sitno
Prenčov 300
969 73 Prenčov



+421 45 672 62 43



info@geoparkbs.sk



48.363060; 18.923522



7 *Outlook over the Bakomi water reservoir*



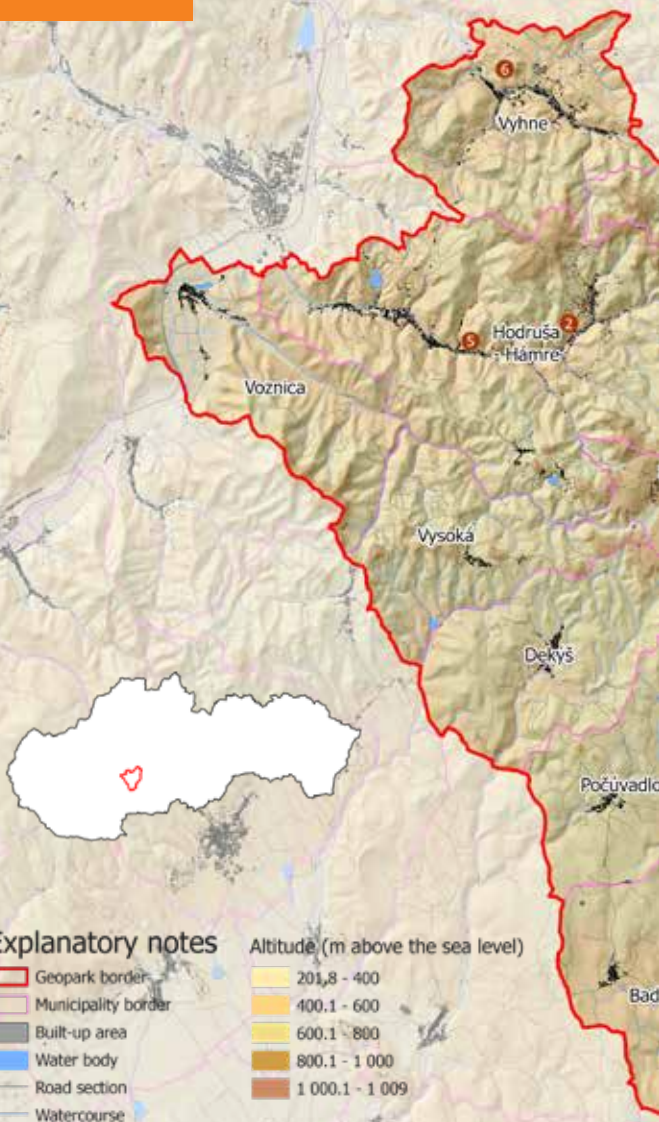
8 *Ping field under Tanád*

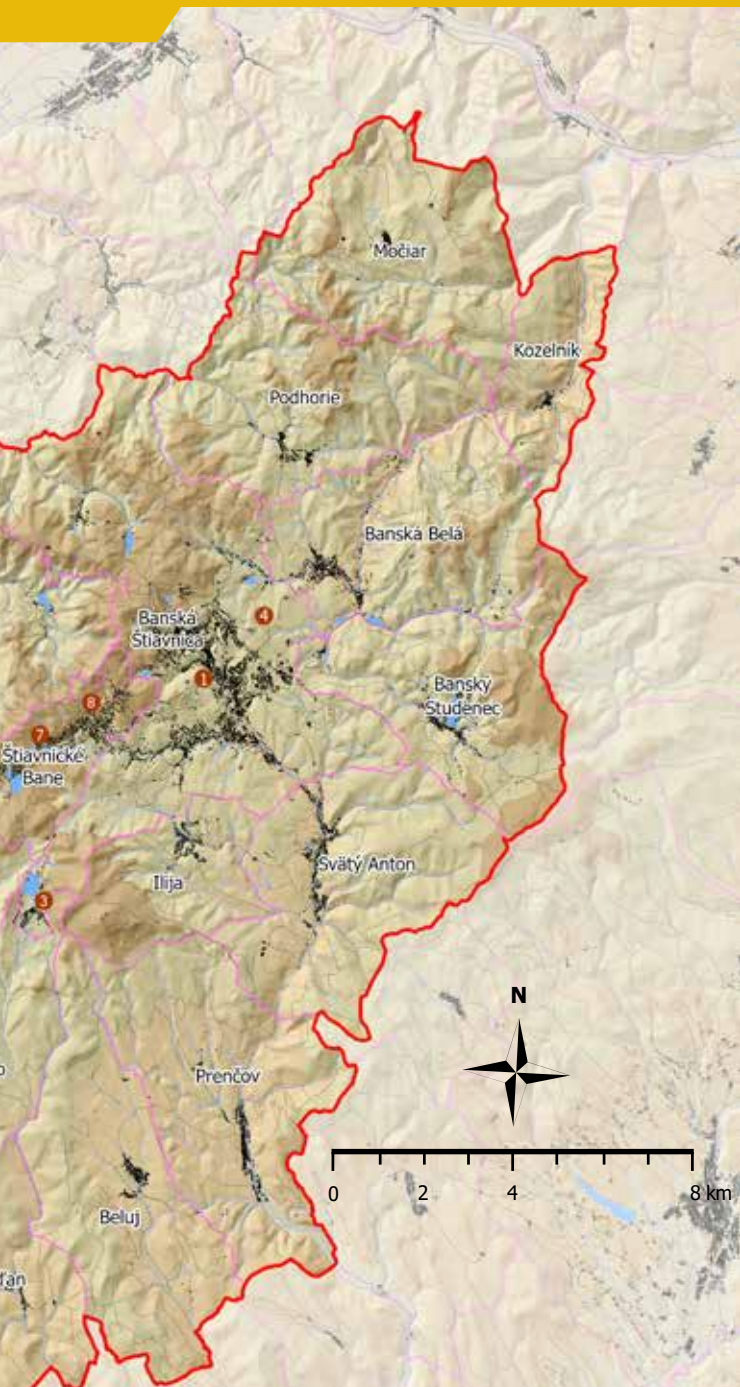


GEO PARK

Banská Štiavnica
Slovak Republic

SLOVAK
GEO
PARK
NETWORK





The activity has been implemented within the framework of national project **Information and providing advice on improving the quality of environment in Slovakia.** The project is cofinanced by Cohesion Fund of the EU under Operational programme Quality of Environment.