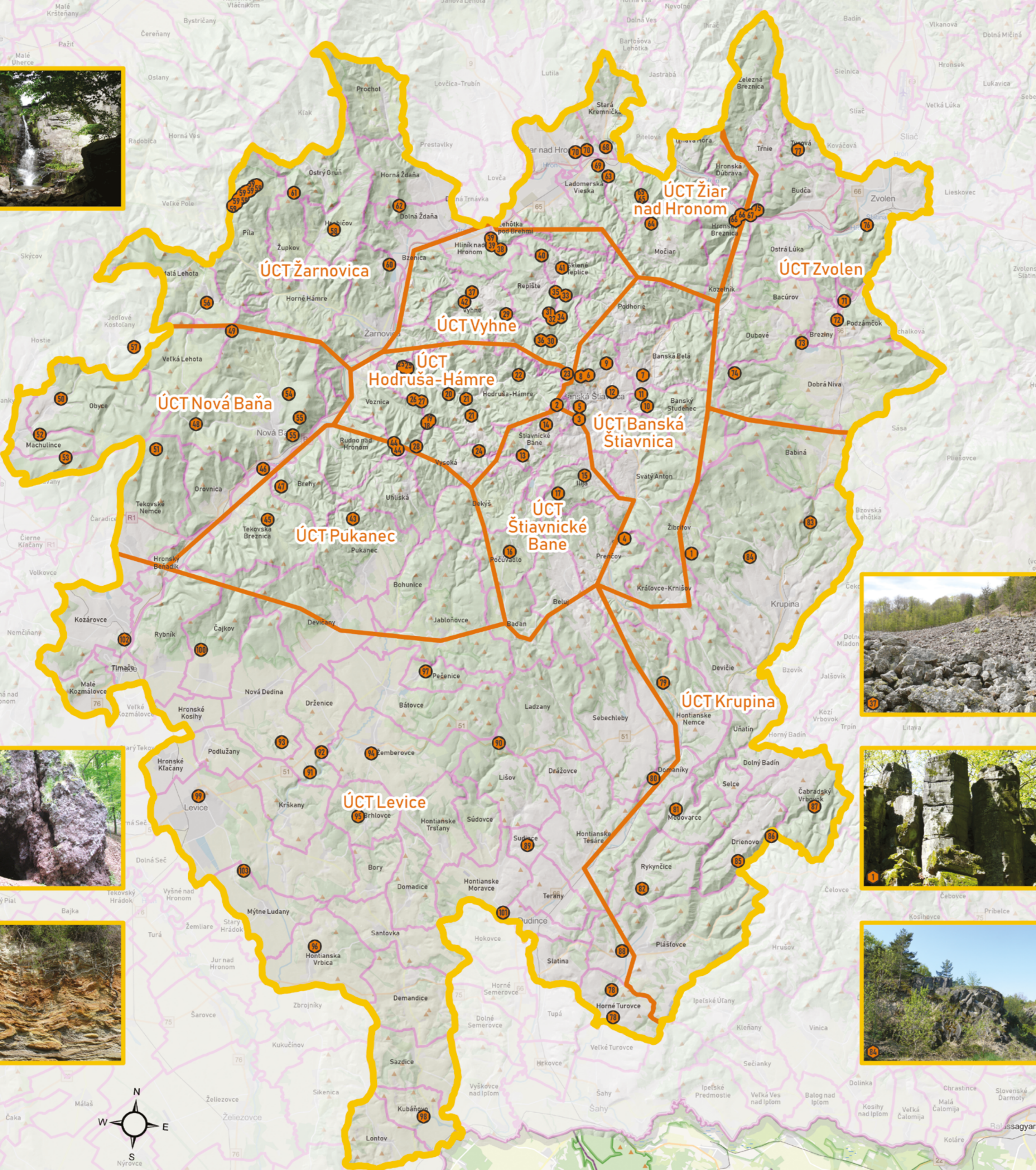
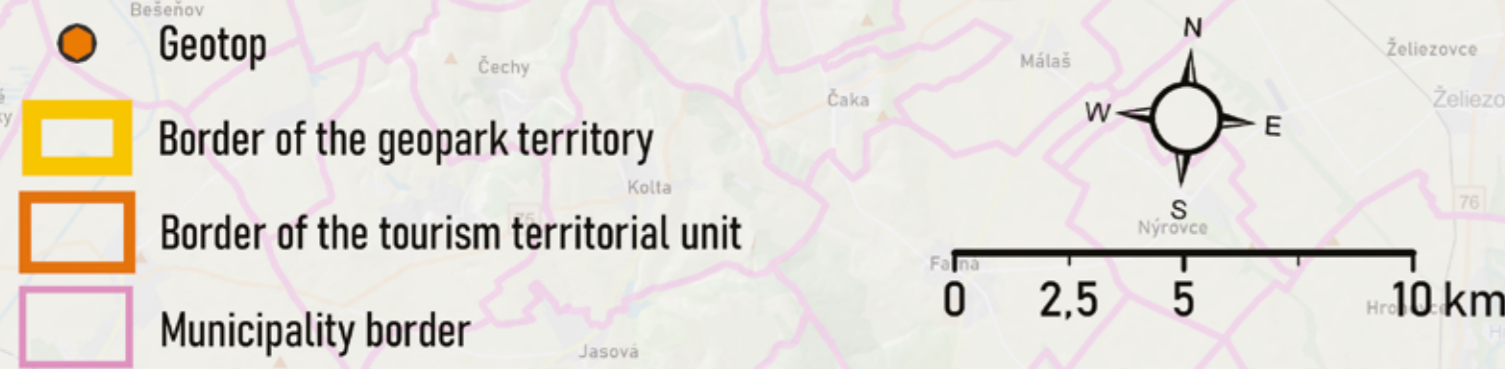
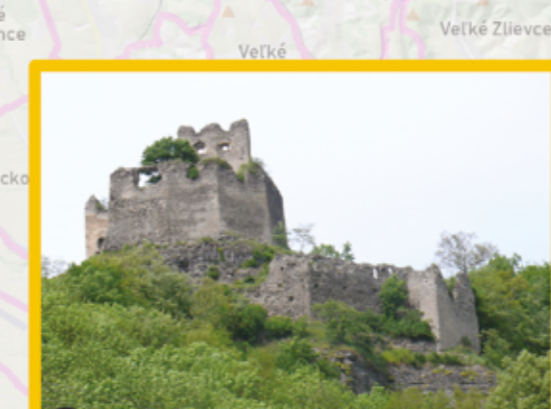
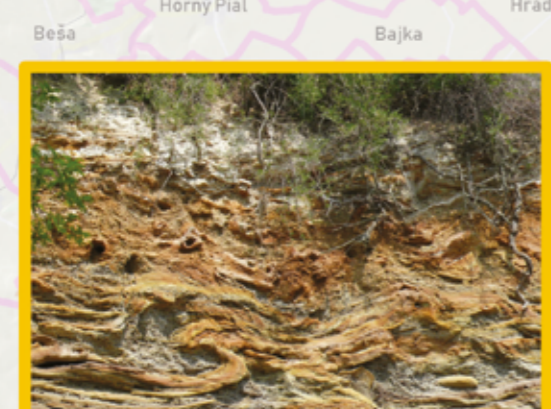


# Geotopes of the Banská Štiavnica Geopark



- P.Ľ. Name and description of the geotope**
- Štangariget - lava flow with columnar jointing, bottom stratovolcanic structure
  - Tanáč Hill - bedded intrusion of andesite porphyry, bottom stratovolcanic structure
  - Pracháren - andesite porphyry, bottom structure of the Štiavnica Stratovolcano
  - Pod Havranom (slope) - lahar breccia, bottom stratovolcanic structure
  - Galgenberg - quarry nearby the open-air museum, bottom stratovolcanic structure
  - Šobov - secondary quartzite
  - Štamberg, Banská Belá - secondary quartzite
  - Pri Červenej Studni - ferriferous breccias
  - Jergitölös - dyke of quartz-diorite porphyry
  - Kysihýbet - extrusion of biotite andesite amphiboles in the caldera fill
  - Kysihýbet - basalt neck in the railway trench
  - Kalvária Hill - basalt neck
  - Gumanina - bottom stratovolcanic structure
  - Štiavnické Bane - bedded intrusion of andesite porphyry, bottom stratovolcanic structure
  - Ilja - ash-pumice tuffs of the Studenec Formation in the caldera fill
  - Podúvadlo - welded ash-pumice tuffs - ignimbrites - upper structure of the Štiavnica Stratovolcano
  - Sitno - rock cliffs of amphibole-pyroxene andesite + biotite, upper structure of the Štiavnica Stratovolcano
  - The Richňavská Dolina Valley - sandstones and schists of the Perm (the Maluziná Formation)
  - Suchá Voznica - andesite flow of the bottom stratovolcanic structure
  - Banská Hodruša - Sandrik - granodiorite intrusion
  - Kopanica - a trench of the state road - bedded intrusion of quartz-diorite porphyry, intrusion of granodiorite
  - The Hodrušská Dolina Valley - road to Andresáty - sill of quartz-diorite porphyry of the Banisko intrusive complex
  - Červená Studňa - bedded intrusion of quartz-diorite porphyry, the Banisko intrusive complex
  - The Richňavská Dolina Valley - forest road trench - dyke of quartz-diorite porphyry, the Banisko intrusive complex
  - Pod Vysokým Bokom - andesite flows of the Sitno Complex
  - Kojatín - welded tuffs (ignimbrites)
  - Havránková Lúka - Kojatín (eastern ridge) - extrusion of rhyolite
  - Pod Veľký Žiar - Rusková - dyke of rhyolite porphyry
  - The Vyhnianska Dolina Valley - Handel - crushed Vyhně granite (porphyric granodiorite)
  - The Vyhnianska Dolina Valley - hybrid rocks at the intersection of diorite and crystalline schists
  - The Zlatý Vrch Hill - The Lazinky Ridge - crushed Vyhně granite
  - The Zlatý Vrch Hill - west of the Bartkov Majer area - early Triassic quartzites
  - Sklené Teplice - the Bukovec Hill - contact of Early Triassic quartzites with the Veporic crystalline complex
  - The Zlatý Vrch Hill - north of the Bartkov Majer area - Paleogene basal group of strata
  - Sklené Teplice - the Teplá Valley - Middle to Late Triassic limestones and dolomites
  - The Vyhnianska Dolina Valley - diorite intrusion
  - Vyhně - stone field
  - Hliník nad Hronom - the Štátna Hora Hill - rhyolite laccolith
  - Hliník - the Šabóva Skala Cliff - rhyolite extrusion
  - The Pustý Hrad Hill - rhyolite extrusion with vitric edges
  - Sklené Teplice - thermal spa - travertine mounds
  - Vyhně - water paradise - travertine mound
  - Tatár - the Obecný Potok Stream - dykes of quartz-diorite porphyry of the Tatár intrusive complex
  - Veľký Žiar - welded ash-pumice tuffs - ignimbrites of the Drastvica Formation
  - The Pútkov Vŕšok Volcano - basalt scoria cone
  - Brehy - basalt flows of the Pútkov Vŕšok Volcano
  - Brehy - Krahučie - conglomerates with ferruginous cement
  - The Stará Huta Waterfall - paleodoline fill in Nová Baňa - Stará Huta area-wise, pyroxene andesite of the bottom structure
  - The Vojšín Hill - amphibole-pyroxene-andesite (+ biotite) lava flow of the Sitno Complex
  - Obyce - welded ash-pumice tuffs - ignimbrites of the Drastvica Formation
  - Veľký Inovec - pyroxene andesite lava flow of the Inovec Formation
  - Machulince - lava flows and hyaloclastite breccias of pyroxene andesites of the Inovec Formation
  - Benát - Kamenné vráta - pyroxene andesite lava flows of the Inovec Formation, lava flow structures
  - Štampoch - the edge of a rhyolite extrusion
  - Nová Baňa - rhyolite quarry Na Háj, the Červená Skala rhyolite cliff
  - Kopanica - stone field (black slope)
  - The Žitava River Valley - pyroxene andesite rock cliff under Tureň Castle ruins
  - Hrabčovo - extrusive dome with an extrusive breccia zone at the edge
  - Markev Vrch Hill - side view of an andesite volcano
  - Revišské Podzámčie - Sitno-type andesite rock cliffs on the top of the castle hill
  - The Vigfás Hill - rock cliffs of amphibole-pyroxene andesites of the Žiarska Kotlina effusive complex
  - The Rakytie Hill - lava flow of amphibole-pyroxene andesite in the crest area of the Rakytie Hill - the Žiarska Kotlina effusive complex
  - Šásovske Podhradie - andesite rock cliff, the Turček Formation
  - Mežiar - siltstone, claystones, diatomites - sediments of the intra-caldera basin
  - The Suť Hill - amphibole-pyroxene andesite protrusion
  - Hronská Breznica - debris flows, lahar breccias, epiclastic volcanic breccias and sandstones
  - Hronská Breznica - flyover - chaotic breccia of a pyroclastic flow
  - Stará Kremnička - rhyolite extrusive dome
  - Ladomer - basaltic andesite lava flow and phreatopyroclastic deposits
  - The Šibeničný Vrch Hill - phreatic cone and an intrusion of basaltic andesite
  - Breziny - Široká Homolka - andesite extrusive dome with garnet
  - Breziny - Podzámček - coarse to block breccias, conglomerates, lahar breccias
  - Dobrá Niva - Žigovci - pyroxene-amphibole andesite extrusion
  - The Tri Kamene Mountain - transition of an extrusion into a lava flow
  - The Čertova Skala Mountain - lahar breccia
  - The Pustý Hrad Castle - chaotic breccias of pyroclastic flow
  - Turová - explosive neck
  - Horné Turovce - elevation of Mesozoic-Paleozoic rocks
  - Hontianské Nemce - Dianiš - debris flows and lahars of the Štiavnica Stratovolcano bottom structure
  - Domaníky - road trench - epiclastic volcanic sandstones and conglomerates of the coastal zone
  - Medovarce - lithological profile of the sublittoral zone facies
  - Ryknice - siltstones, sandstones, conglomerates, sediments of the deeper sublittoral zone
  - Kňazova Hra - lava flow of the bottom stratovolcanic structure on the eastern stratovolcano slope
  - Ficberg - pyroxene-andesite lava flow in the paleodoline fill (erosion farrow) on the SE slope of the Štiavnica Stratovolcano
  - Drienovo-Gašparov vršok - chaotic breccias of a pyroclastic flow of the Čelovec pyroclastic volcano
  - Litava valley - sediments of the sublittoral zone
  - Čabraď - castle hill, coastal zone sandstones and conglomerates of the Baden sea
  - Piášfonce - sediments of the sublittoral zone
  - Sudince - shallow water marine sediments
  - Ladzany - the Husárka Hill - lava flow textures
  - Horša - vitreous pyroxene andesite lava flow
  - Vozárov Mlyn - hyaloclastite breccias
  - Kamenec - sediments of the Sarmatian litteral zone
  - Žemberovce - epiclastic volcanic sandstones with layers of pumice tuffs
  - Brhlavce - pumice tuffs and rock dwellings
  - Hontianska Vrbica - delta sediments
  - Pečnice - forms of andesite weathering
  - Kubáňovo - delta sedimentation
  - Levice - the castle hill - hyaloclastite breccias
  - Čajkov - ash-pumice tuffs
  - Kozárovce - lava flow, hyaloclastite breccias
  - Dudince - freshwater limestones - travertines
  - Levice - Vápnik (Šiktáš) - travertine quarry

This activity has been implemented within the national project Information and Providing Advice on Improving the Quality of the Environment in Slovakia. This project was co-financed by the EU Cohesion Fund under the Operational Programme Quality of Environment.